

This patient has a
LARYNGECTOMY

and **CANNOT** be intubated or oxygenated via the mouth

Follow the LARYNGECTOMY algorithm of breathing difficulties

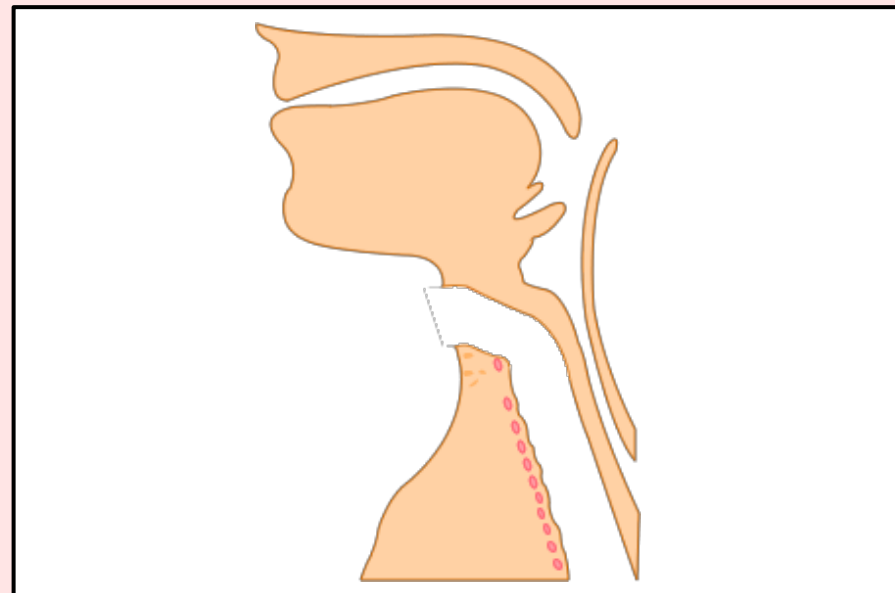
Performed on (date)

Tracheostomy tube size (if present)

Hospital / NHS number

Notes:

There may not be a tube in the stoma.
The trachea (wind pipe) ends at the neck stoma



Emergency Call: Anaesthesia ICU ENT MaxFax Emergency Team

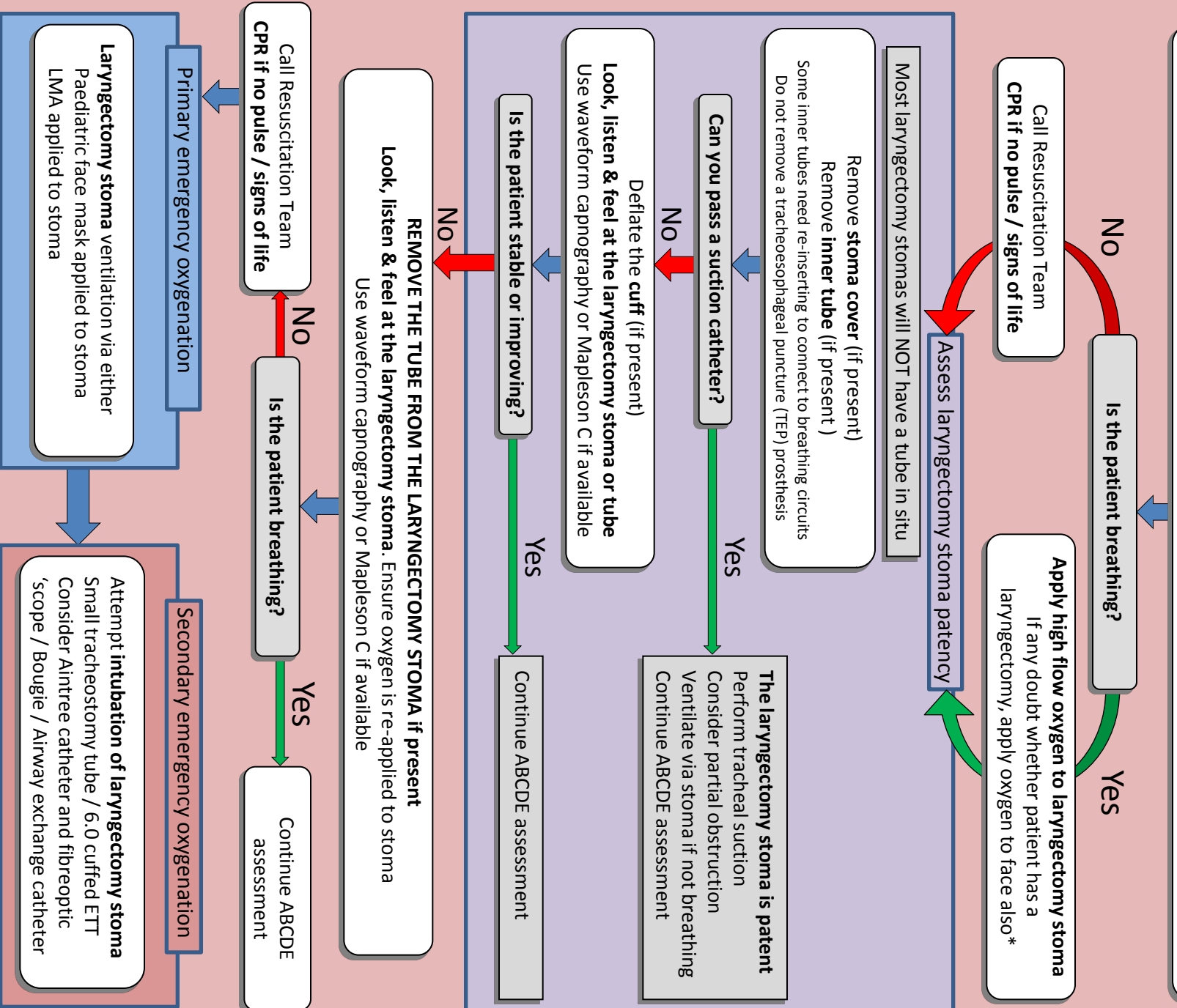
Emergency laryngectomy management

Call for airway expert help

Look, listen & feel at the mouth and laryngectomy stoma

A Mapleson C system (e.g. 'Waters circuit') may help assessment if available

Use **waveform capnography** whenever available: exhaled carbon dioxide indicates a patent or partially patent airway



* Applying oxygen to the face and stoma is the default emergency action for all patients with a tracheostomy